



# PREPRUFE® 250 Pre-applied Waterproofing Membrane.

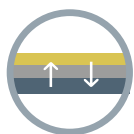
**PREPRUFE®**  
STRUCTURAL WATERPROOFING SYSTEM

# PREPRUFE® 250 Pre-applied Waterproofing Membrane

Pre-applied waterproofing membrane that bonds integrally to poured structural concrete, incorporating PREPRUFE®'s Advanced Bond Technology™ on high density polyethylene carrier sheet. For use below foundation slabs and blind side wall applications.

PREPRUFE® 250 is an economical waterproofing solution intended for low hydrostatic pressure or intermittent water conditions in shallow basements. Applications include construction such as garages, plant rooms and utility grade basements.

## Features & Benefits



### Fully Bonded System

0.8mm thick PREPRUFE® 250 seals to concrete & remains unaffected by ground settlement beneath slabs



### Zero Water Migration

Full and unique adhesive bond to concrete prevents water tracking between the membrane and the structure



### Advanced Bond Technology™

Engineered to adhere directly to poured concrete avoiding the need for costly & time consuming protection layer



### Tough & Flexible

Composed of durable and flexible HDPE geomembrane that is resistant to site activities



### Resistance to Chemicals, Gas & Moisture

Achieved by the HDPE geomembrane and the integral continuous waterproofing seal



### Schedule Acceleration

Immediately trafficable membrane allows same day rebar installation



### No Impact of Dirt & Site Contamination

PREPRUFE® 250 patented surface is non-absorbent and smooth, easy to clean, allowing up to 7 weeks of UV exposure onsite



### Self Adhesive Overlap

Strong and fast overlap selfedge bonding that makes PREPRUFE® 250 a robust pre-applied solution for harsh jobsite conditions



### Simple Installation

Requiring only 2 companion products to complete the installation including complex detailing, and no special equipment



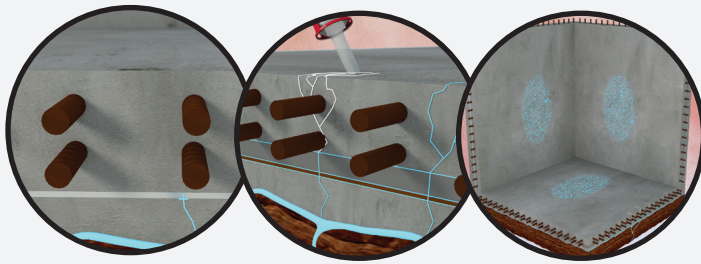
### Safe

Cold applied, no heating/welding, no torching and no hazardous fumes

# Why is it important to have a Fully Bonded Membrane?

## Resisting Water Migration

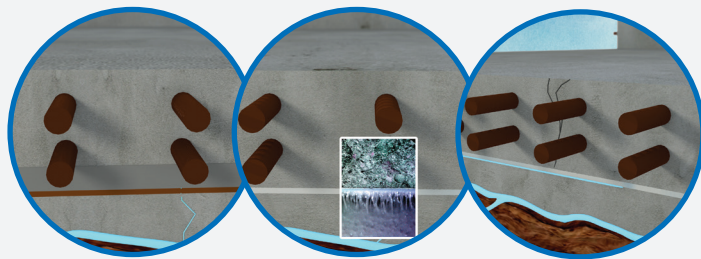
### Conventional Unbonded Membranes



Conventional membranes are either unbonded or bonded to the substrate and normally covered with protective layers or screed separating them from the structure. When there is damage or a defect in the membrane, water can track between the membrane and the structural concrete looking for cracks or weakness in the concrete.

The unbonded protection layer worsens the problem by providing water paths across the whole slab. Leaks can be temporarily sealed from the inside but the water will keep travelling under pressure or by capillary action to find more ways into the structure.

### PREPRUFE® Fully Bonded Membrane



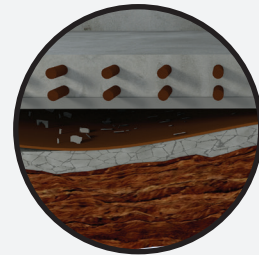
With PREPRUFE® membranes, the protection layer is eliminated and the membrane is bonded tightly to the structural concrete to prevent water penetration.

Independent testing has shown PREPRUFE® to resist lateral water migration under pressure.

Compared with welded or hot applied membranes, the simplicity of PREPRUFE® installation has minimised the complexity of waterproofing and reduced the risk of failure.

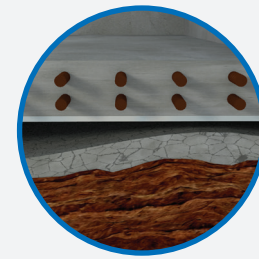
## Ground Settlement

### Conventional Unbonded Membranes



Most structures, especially those on piled foundations, are liable to partial or full ground settlement below the slab. When ground settles or compacts unbonded membranes will fall away from the structure leading to failures and water penetration.

### PREPRUFE® Fully Bonded Membrane



With PREPRUFE®, the membrane is fully sealed to the structural concrete and is unaffected by any ground settlement. The PREPRUFE® membrane remains fully bonded to the structure to resist hydrostatic pressure and avoid membrane stress.



# Project References

Green Side Residence	Croatia
Office Building Fuzja C-D	Poland
Dabska Plaza Residential Complex	Poland
Ul. Rajska 3 - Apartments	Poland
Osiedle Matexi II stage	Poland
Muzeum Inzynierii Miejskiej	Poland
BM Swiatowida GRUPA ECO I Stage	Poland
Generation Park Building B	Poland
Osiedle Matexi I stage	Poland
BM ROHATYNSKA	Poland
BM Dereniowa	Poland
Komenda Policji	Poland
BUM Dietla	Poland
Omantel Head Quarter	Oman
Qetaifan Island North; Ph 1, Water Park	Qatar
Vida Creek - Hotel & Service Apartment	UAE
Dubai Studio City	UAE
YEDİ Mavi Projesi	Turkey
AKZ Strada ETAP-2	Turkey
AKZ Strada ETAP-1	Turkey
Sahabiye Kentsel Dönüş.1.Etap	Turkey
Yapi Ataşehir Modern İzmir	Turkey

Proven, long-lasting  
structural waterproofing.

Visit us at **gcpat.pl**

GCP Applied Technologies is a leading global provider of construction products technologies. GCP also specialises in additives for cement and concrete, and specialty systems. GCP products have been used to build some of the world's most renowned structures.

More information is available at [www.gcpat.pl](http://www.gcpat.pl) or contact [Tomasz.Precikowski@gcpat.com](mailto:Tomasz.Precikowski@gcpat.com)

We hope the information here will be helpful. It is based on data and knowledge considered to be true and accurate, and is offered for consideration, investigation and verification by the user, but we do not warrant the results to be obtained. Please read all statements, recommendations, and suggestions in conjunction with our conditions of sale, which apply to all goods supplied by us. No statement, recommendation, or suggestion is intended for any use that would infringe any patent, copyright, or other third party right.

GCP APPLIED TECHNOLOGIES and Preprufe are trademarks which may be registered in the United States and/or other countries, of GCP Applied Technologies Inc. This trademark list has been compiled using available published information as of the publication date and may not accurately reflect current trademark ownership or status. These products may be covered by patents or patents pending.

© Copyright 2021 GCP Applied Technologies Inc. All rights reserved. 06/2021  
GCP Italiana S.p.A. Via Trento 7, 20017 Passirana Di Rho, Milano, Italy